



# Welsh Government / ADR Wales Response to Covid-19

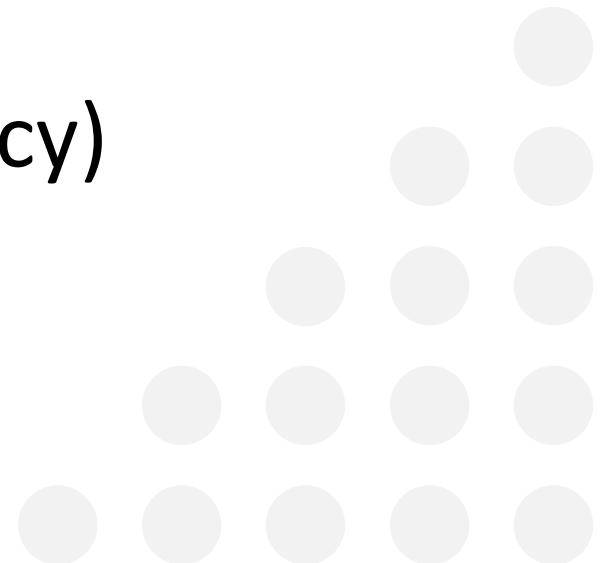


---

Llywodraeth Cymru  
Welsh Government

# Structure of Presentation

- Policy context (me)
- Household composition & characteristics of those on the Shielding Patients List (Tony)
- Vaccination of teachers (Lucy)



# Policy context

Massive Welsh Gov concern around those who had been advised to shield

Although whole population subject to huge restrictions, those on the SPL were advised to restrict their activities even further. Concerns around:

- Children living with someone on the SPL
- Vitamin D deficiencies
- Isolation
- Teachers on the SPL

In last few months interest turned to vaccination programme

**Over to Tony then Lucy!**

Shielding teachers and teaching assistants during the coronavirus (COVID-19) pandemic: June 2020

Uywodaeth Cymru  
Welsh Government

Cymraeg

» **Coronavirus (COVID-19) guidance** Hide X

All of Wales is at alert level 0. [Read the current guidance.](#)

Home > **Statistics and research** >

Shielding teachers and teaching assistants during the coronavirus (COVID-19) pandemic: June 2020

STATISTICS

**Shielding teachers and teaching assistants during the coronavirus (COVID-19) pandemic: June 2020**

An analysis using linked data to estimate the number of teachers and teaching assistants that are shielding in Wales in June 2020.

Covid: Shielding alone 'felt like slippery slope to grave'

Let us know you agree to cookies

We use cookies to give you the best online experience. Please cookies.

BBC Sign in Home News Sport Weather

**NEWS**

Home Coronavirus Climate UK World Business Politics Tech Science Health Family

Wales Wales Politics Wales Business North West North East Mid South West South East

**Covid: Shielding alone 'felt like slippery slope to grave'**

By Tyler Edwards  
Journalist, BBC News

8 November 2020

Coronavirus pandemic

Covid: Call for all homes in Wales to have private outdoor space

432.22 metres average distance people live from a public park or garden

3.61 public green spaces on average in a 1,000m radius of homes

Source: Ordnance Survey/ Office of National Statistics

At the start of the first lockdown, official figures showed 133,542 Welsh households did not have access to a private outdoor space.

This is the equivalent of 9% of households in Wales, **according to Office for National Statistics figures.**

The data also shows at least 36% of those living in flats in Wales did not have access to a private space, a higher rate than in England or Scotland.

More than 17,000 people on the shielding list, who were told not to leave their homes, had **no access to any outdoor space.**

**More walkers and narrow pavements**

The rise and fall of a global fraudster

How did the social media influencer steal millions?

An electronic backdrop to help you focus

Defeat distraction with these non-stop beats...

**Most Read**

Empty fuel pumps down to excess buying - minister **1**

Woman and children died due to

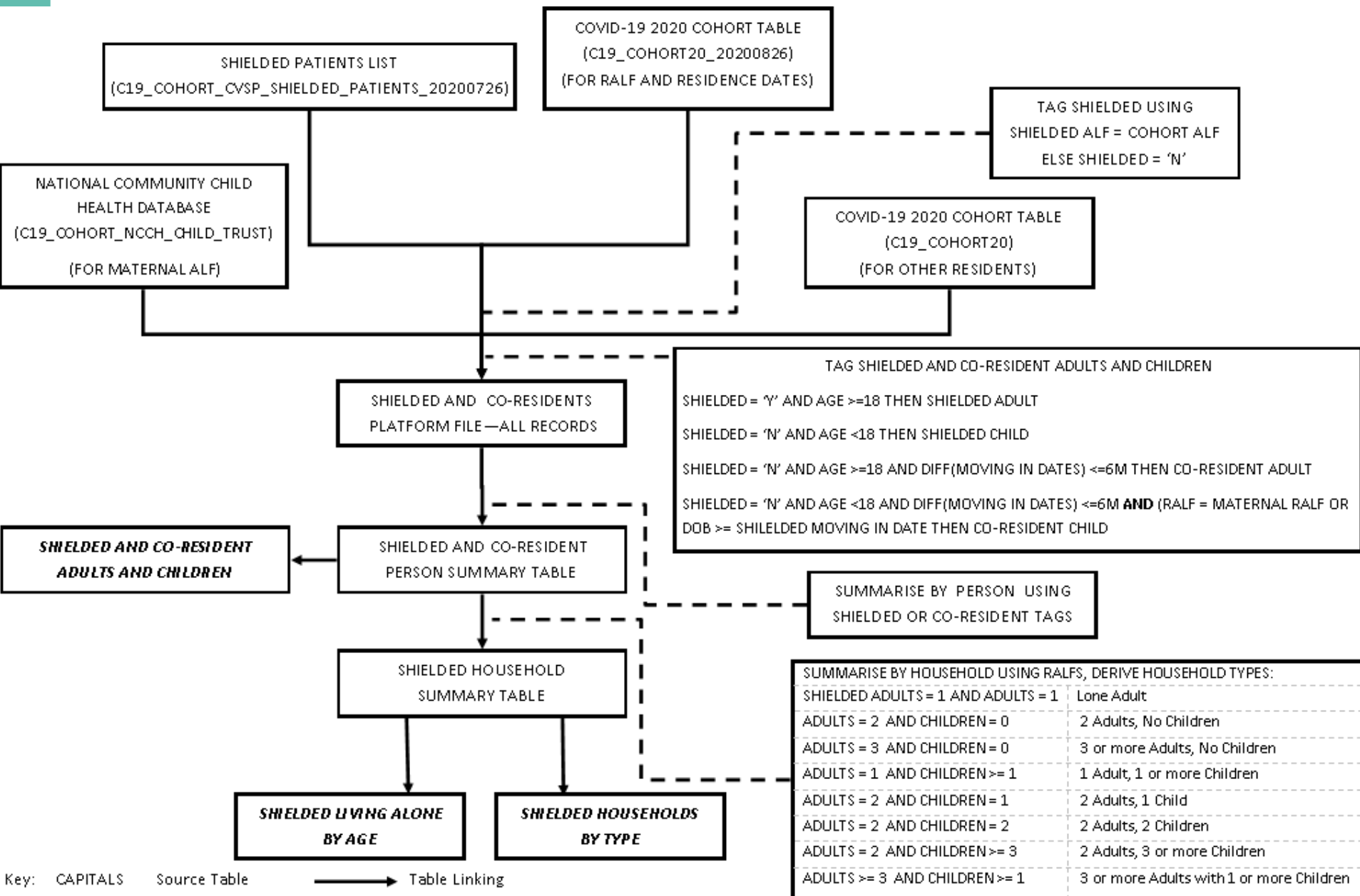
# COVID-19 Research - ADRU

- Shielding and...
  - Teachers and Teaching Assistants
  - Outdoor Space
  - Co-resident Children
  - Household Composition
  - Socio-economic characteristics
    - Material / Financial Deprivation
    - Internet Access
    - Welsh Language

# Shielded Household Composition

- Used SAIL not WGSERP
- Shielded list linked with:
  - Welsh Demographic Service (WDSD)
  - COVID-19 2020 Cohort
  - NCCHD
- Also looked at Relative Mortality  
(Shielded / Co-resident)

# Method



Key: CAPITALS Source Table      → Table Linking

**BOLD ITALIC** Output Measure      - - - - Record Processing



# Headline Results

Table 1: Numbers of Households and People Living in Shielded Households by Household Type in Wales. (a)

As at 26/07/2020

Household Type	Households	Persons
Lone Adult	63,980	63,980
2 Adults, No Children	34,864	69,728
3 or more Adults, No Children (b)	12,120	49,674
1 Adult, 1 or more Children	3,466	8,940
2 Adults, 1 Child	2,540	7,620
2 Adults, 2 Children	1,696	6,784
2 Adults, 3 or more Children	693	3,737
3 or more Adults with 1 or more Children <sup>®</sup>	1,982	10,568
Household Type not Identified (c)	1,826	1,992
Total - Wales	123,167	223,023

(a) Please see the Notes page for relevant quality information

(b) May include households with adults living alone or in a couple not identified elsewhere due to sharing the same Residential Identifier i.e. blocks of flats etc.

(c) This includes households where it has not been possible to determine whether an adult is resident or not.

(r) Category revised / corrected on 9 November 2020

# LA Results

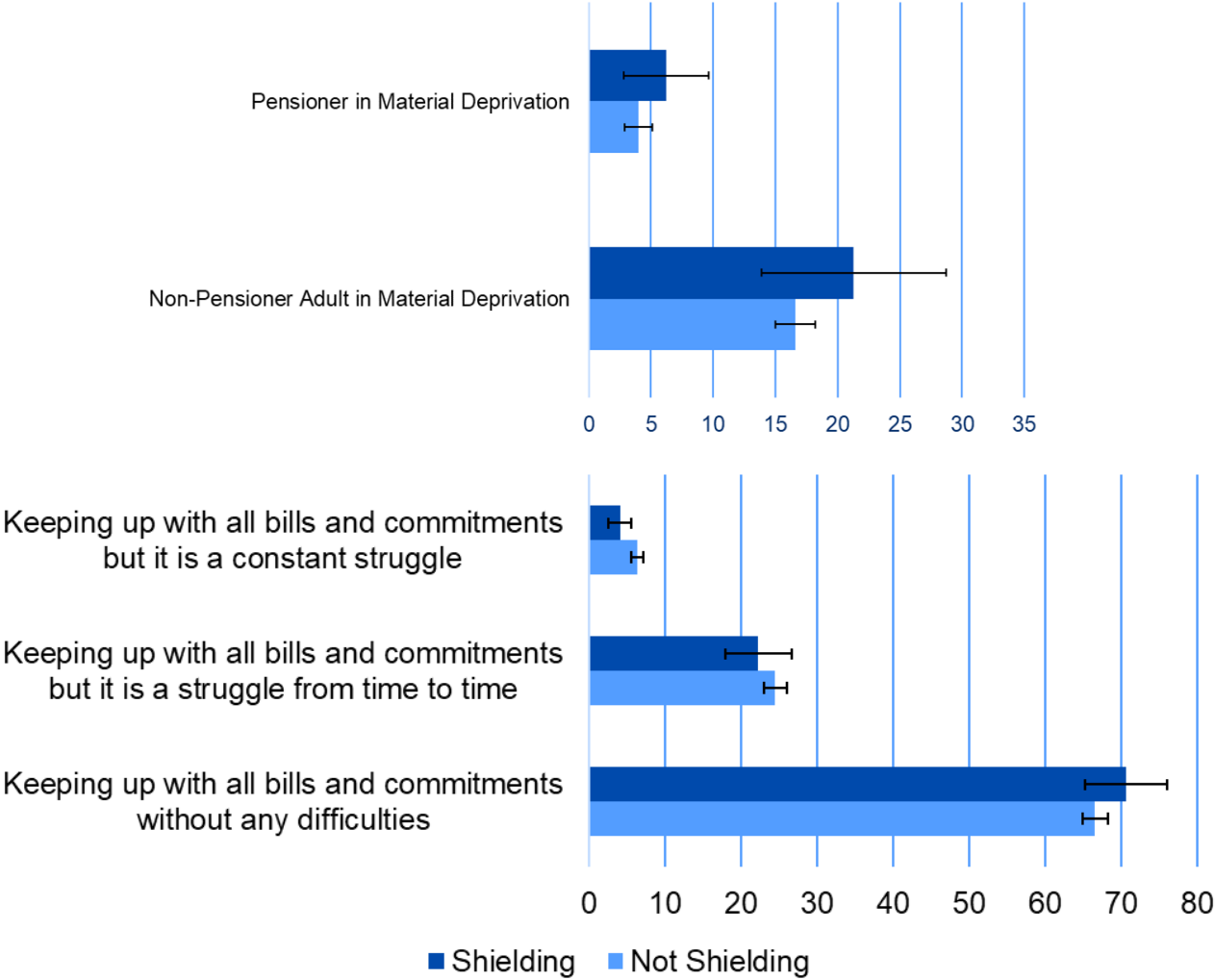
Table 4: Number of Shielded Persons Living Alone in Wales by Local Authority and Age Group. (a)(b)(c)

As at 26/07/2020							
Local Authority Name	Local Authority Code	All Ages	18-29	30-44	45-59	60-74	75+
Isle of Anglesey	W06000001	1,419	33	82	293	564	447
Gwynedd	W06000002	2,363	58	138	427	973	767
Conwy	W06000003	2,174	48	115	422	848	741
Denbighshire	W06000004	1,952	39	101	359	785	668
Flintshire	W06000005	3,401	82	203	650	1359	1107
Wrexham	W06000006	3,065	90	193	595	1251	936
Ceredigion	W06000008	1,361	32	53	212	566	498
Pembrokeshire	W06000009	2,572	61	118	480	1039	874
Carmarthenshire	W06000010	4,014	85	237	814	1615	1263
Swansea	W06000011	4,477	125	272	931	1790	1359
Neath Port Talbot	W06000012	3,138	62	194	647	1360	875
Bridgend	W06000013	3,175	64	188	653	1263	1007
Vale of Glamorgan	W06000014	2,526	64	155	495	958	854
Cardiff	W06000015	6,014	219	504	1312	2255	1724
Rhondda Cynon Taf	W06000016	6,144	136	381	1212	2540	1875
Caerphilly	W06000018	3,810	101	251	810	1522	1126
Blaenau Gwent	W06000019	1,845	43	134	413	747	508
Torfaen	W06000020	2,022	72	138	414	789	609
Monmouthshire	W06000021	1,427	43	79	287	540	478
Newport	W06000022	2,582	80	212	523	969	798
Powys	W06000023	2,623	50	106	445	1014	1008
Merthyr Tydfil	W06000024	1,637	41	116	333	688	459

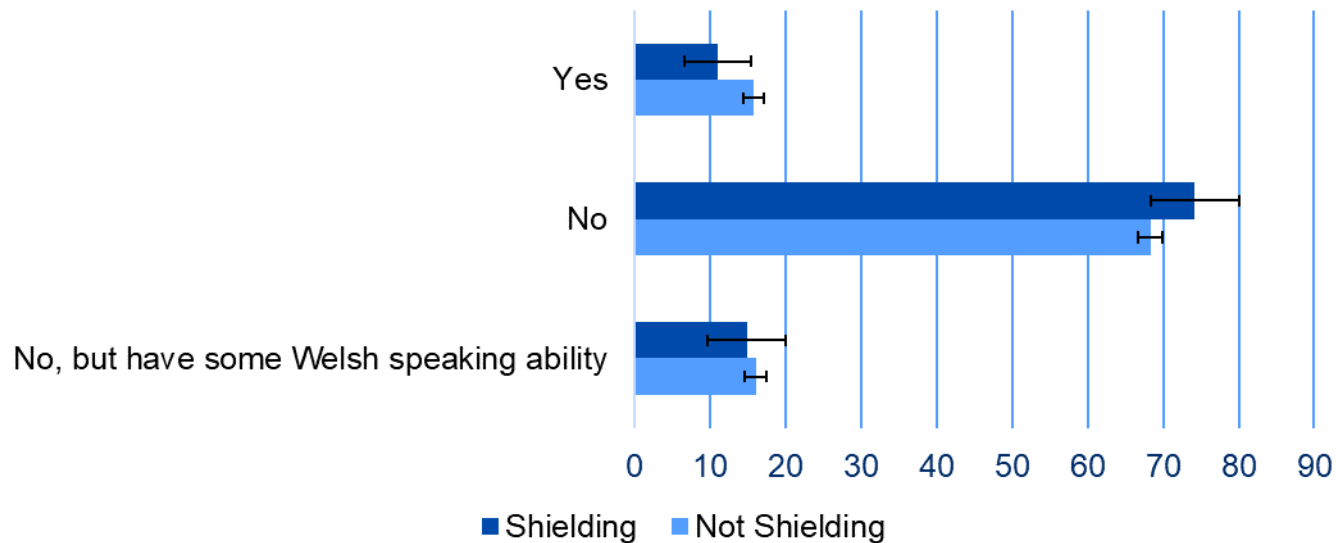
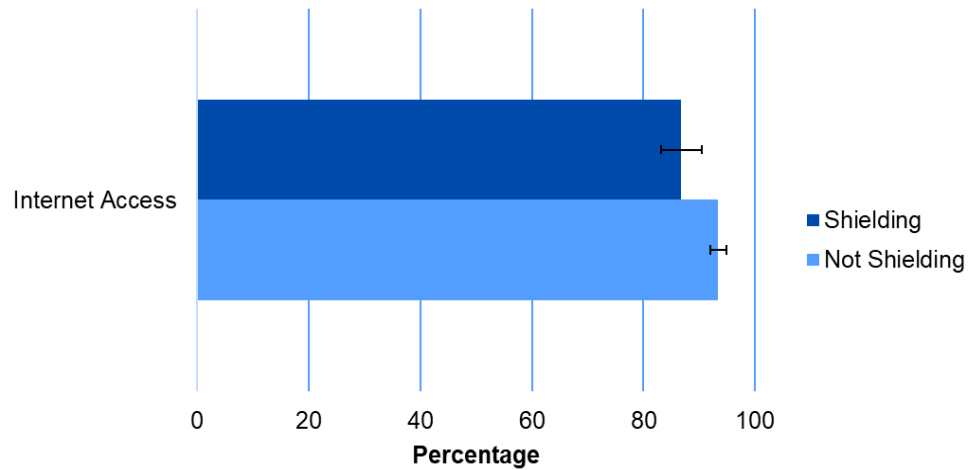
# Socio-economic characteristics

- Later Publication (April 2021)
- SPL Linked to National Survey for Wales for:
  - 2018-19 (Deprivation, Internet Access, Welsh Language)
  - 2017-18 (Mental Wellbeing / Loneliness)
- (Originally looked at for Shielded vs Co-resident with rolled-together samples)

# Material and Financial Deprivation



# Internet Access and Ability to Speak Welsh



# School Staff Vaccination Uptake

- To inform policy on the demographics of the school workforce and their vaccination status in order to identify areas of concern and enable targeted intervention strategies.
- Outputs include: three adhoc data releases with figures broken down for staff role, phase and local authority.
- Broader report covering more demographic breakdowns including ethnicity and disability (hopefully in February 2022).

# School Workforce Annual Census

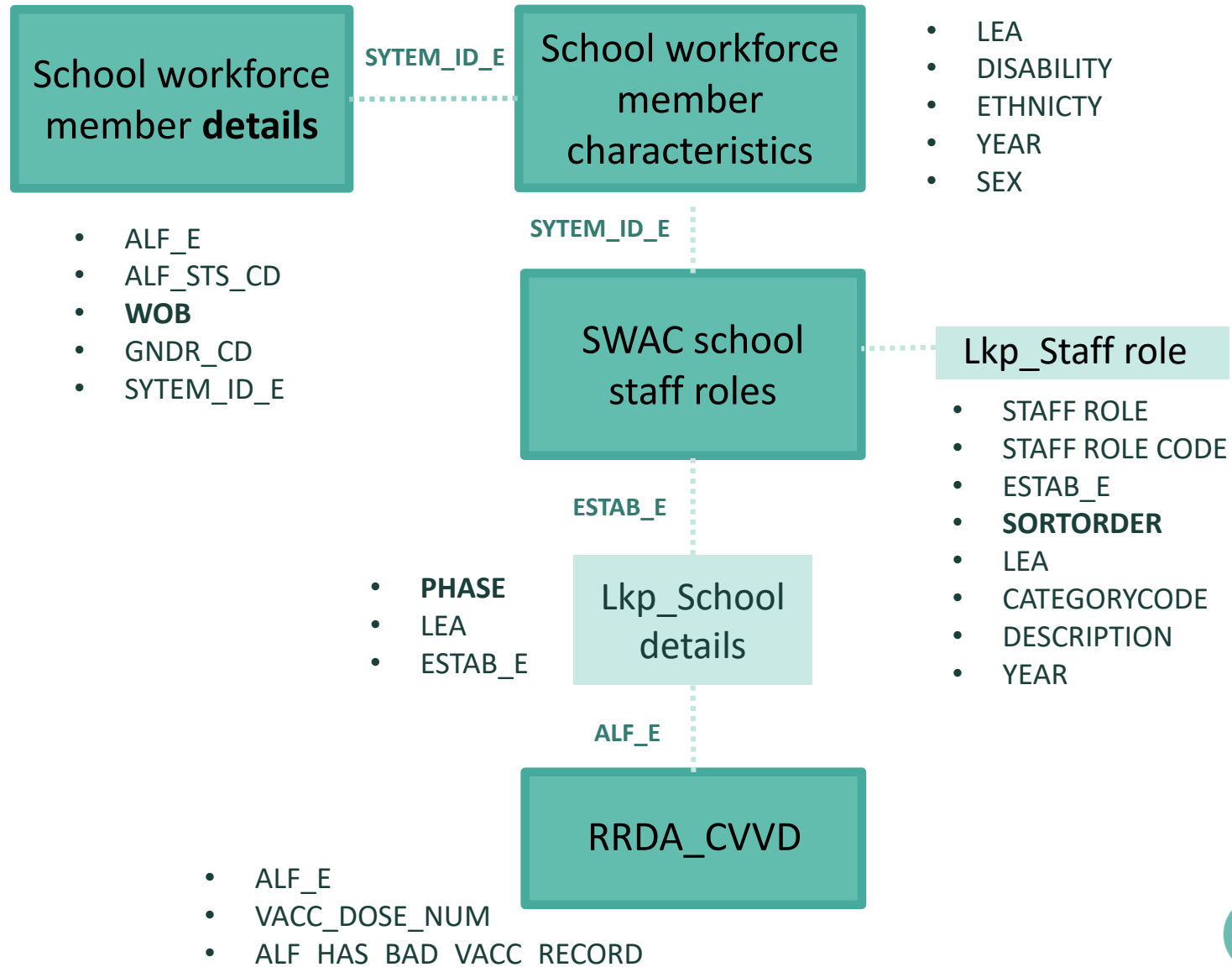
- Comprised of two data collections covering the 2019/2020 and 2020/2021 academic years.
- The first is data on contracts and pay from local authorities and the second is on the workforce directly from schools.
- The two data collections contain overlapping but not identical staff records.
- Need to account for duplicate records when linking

# Covid Vaccination Dataset (RRDA\_CVVD)

- This 'research-ready' dataset covers all patients and vaccinations administered for COVID-19, in or funded by the NHS **in Wales**.
- It's updated daily and includes information on age, gender, whether recipients were in a priority group as well as date, location and type of vaccination.
- Data set does not include vaccines administered outside of Wales.

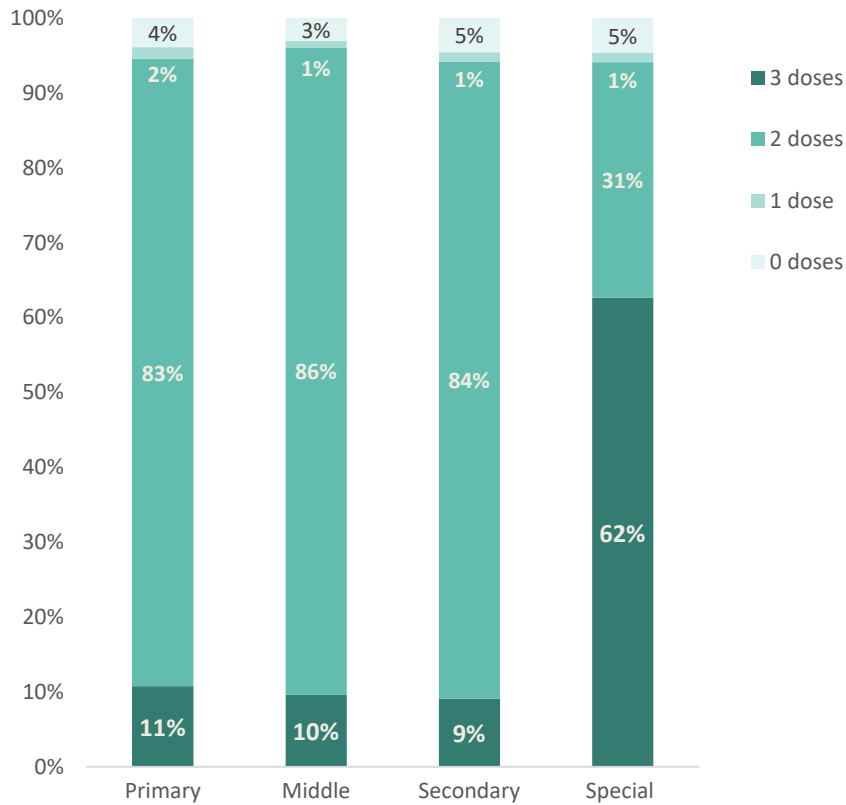


# Methodology

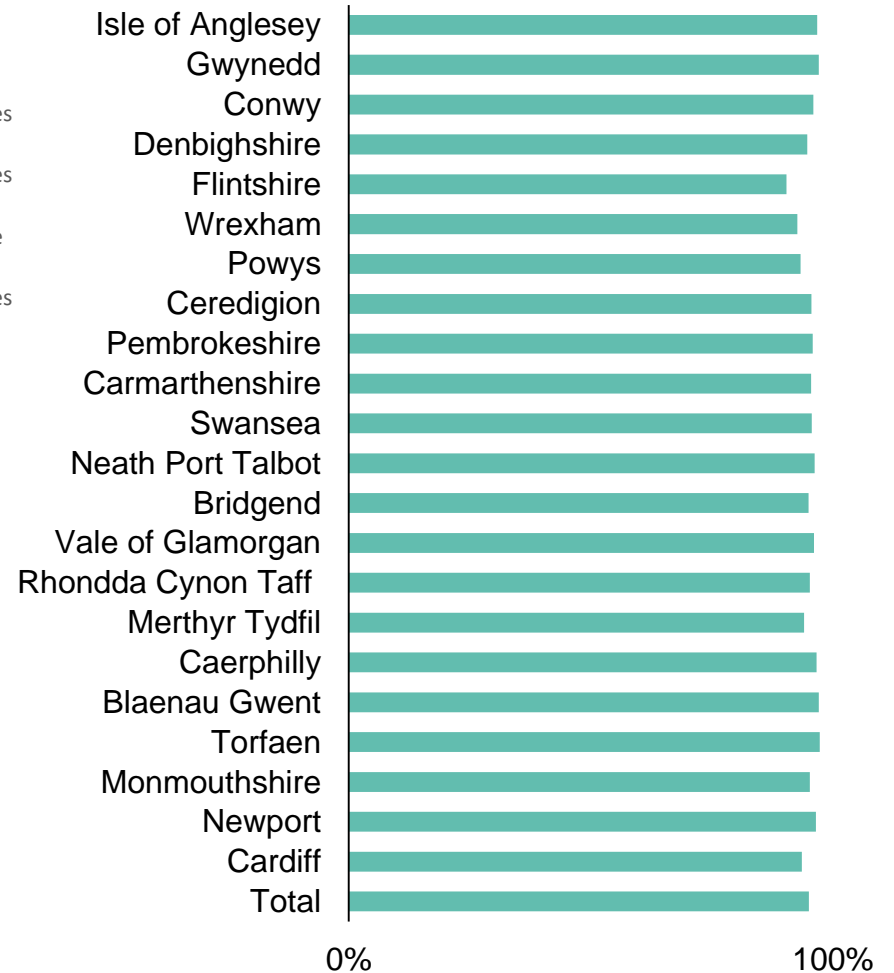


# Results

School Workforce by Phase and Vaccine Number, November 2021



School Workforce with > 1 dose by Local Authority, November 2021



# Pand | AR

New work programme aims to unlock the potential in the wealth of data available to help inform and support a sustainable response and recovery from COVID.

The project is structured around Welsh Government's five harms of Covid:

1. Harm directly arising from COVID-19 infections;
2. Indirect COVID-19 harms due to surge pressures on the health and social care system and changes to healthcare activity
3. Harms arising from population based health protection measures (e.g. lockdown)
4. Economic harm arising both from COVID-19 directly and population control measures, like lockdown
5. Harms arising from the way COVID-19 has exacerbated existing, or introduced new, inequalities in our society.

# Publications

- <https://gov.wales/shielding-teachers-and-teaching-assistants-during-coronavirus-covid-19-pandemic-june-2020-html>
- <https://gov.wales/children-living-shielded-households-during-coronavirus-covid-19-pandemic-june-2020-html>
- <https://gov.wales/shielded-patients-access-private-outdoor-space-during-coronavirus-covid-19-pandemic-june-2020-html>
- [Shielded households \(composition and characteristics during the coronavirus \(COVID-19\) pandemic\): July 2020 | GOV.WALES](#)
- <https://gov.wales/characteristics-those-shielding-patients-list-identified-using-national-survey-wales-data-april-2018-march-2019>



**Thank you for listening, any questions?**

[ADR UWales@gov.wales](mailto:ADR UWales@gov.wales)



---

Llywodraeth Cymru  
Welsh Government