

# GP Data - Full Report

Carys Jones

Date Generated: 2023-11-14

Date Range Applied: 2022-10-01 - 2023-09-30

Tables Used:

- SAILWLGPV.GP\_EVENT\_CLEANSED\_20231001
- SAILWSDV.AR\_PERS\_20231106
- SAILREFRV.WELSH\_GP\_CLUSTER\_PRACTICES\_20230729
- SAIL0286V.WLGP\_CLEAN\_GP\_REG\_BY\_PAC\_INCLNONSAIL\_MEDIAN\_20231001
- SAILX0675V.WSDV\_CLEAN\_ADD\_GEOG\_CHAR\_LSOA2011\_20231106
- SAILREFRV.WALES\_GP\_PRACTICES\_MAIN\_SITES\_CLUSTERS\_20210407

This report describes the General Practice data in SAIL in two ways:

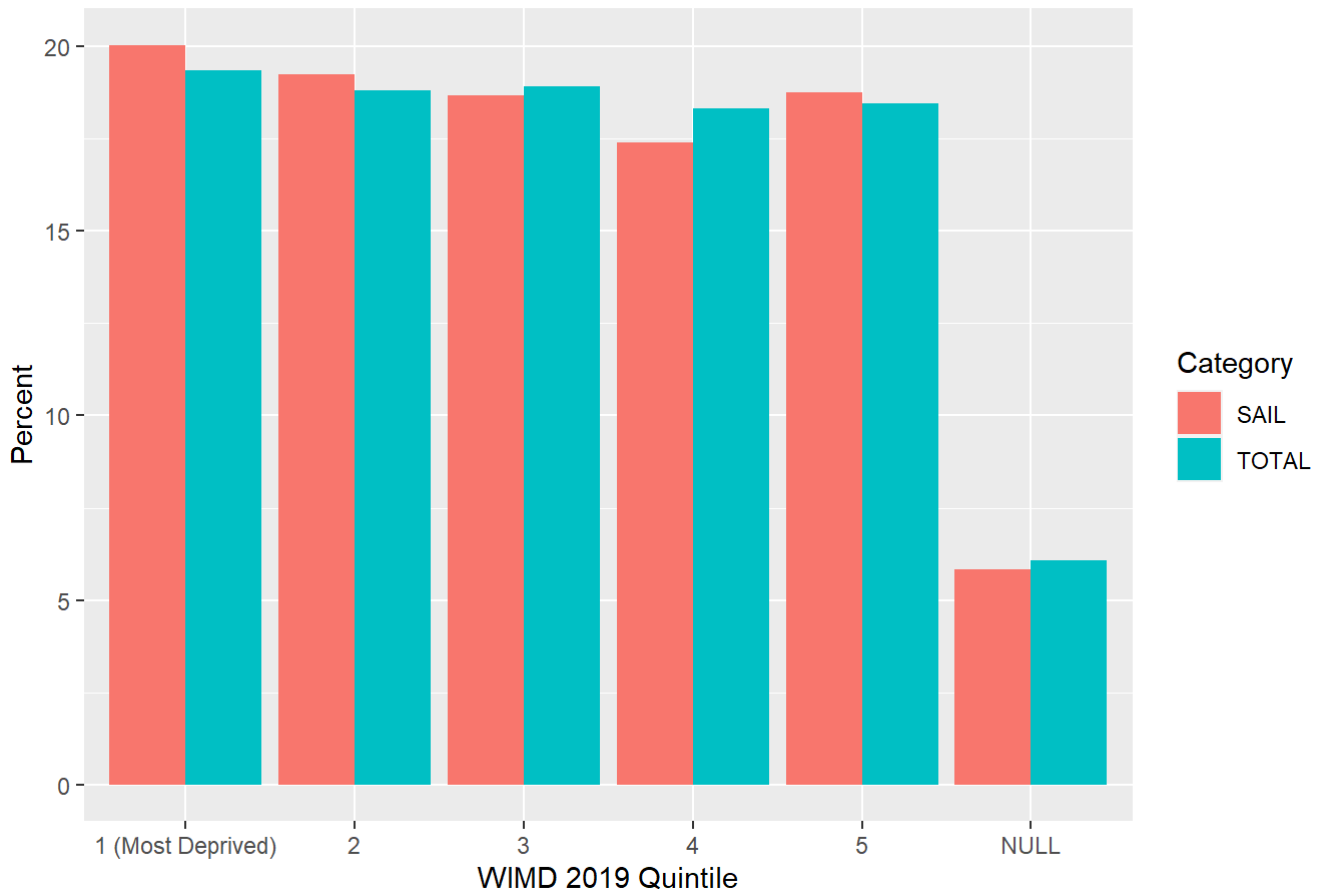
- a. the proportion of the Welsh population with a General Practice record in SAIL
- b. the proportion of General Practices in Wales that are contributing data to SAIL

## Summary Plots

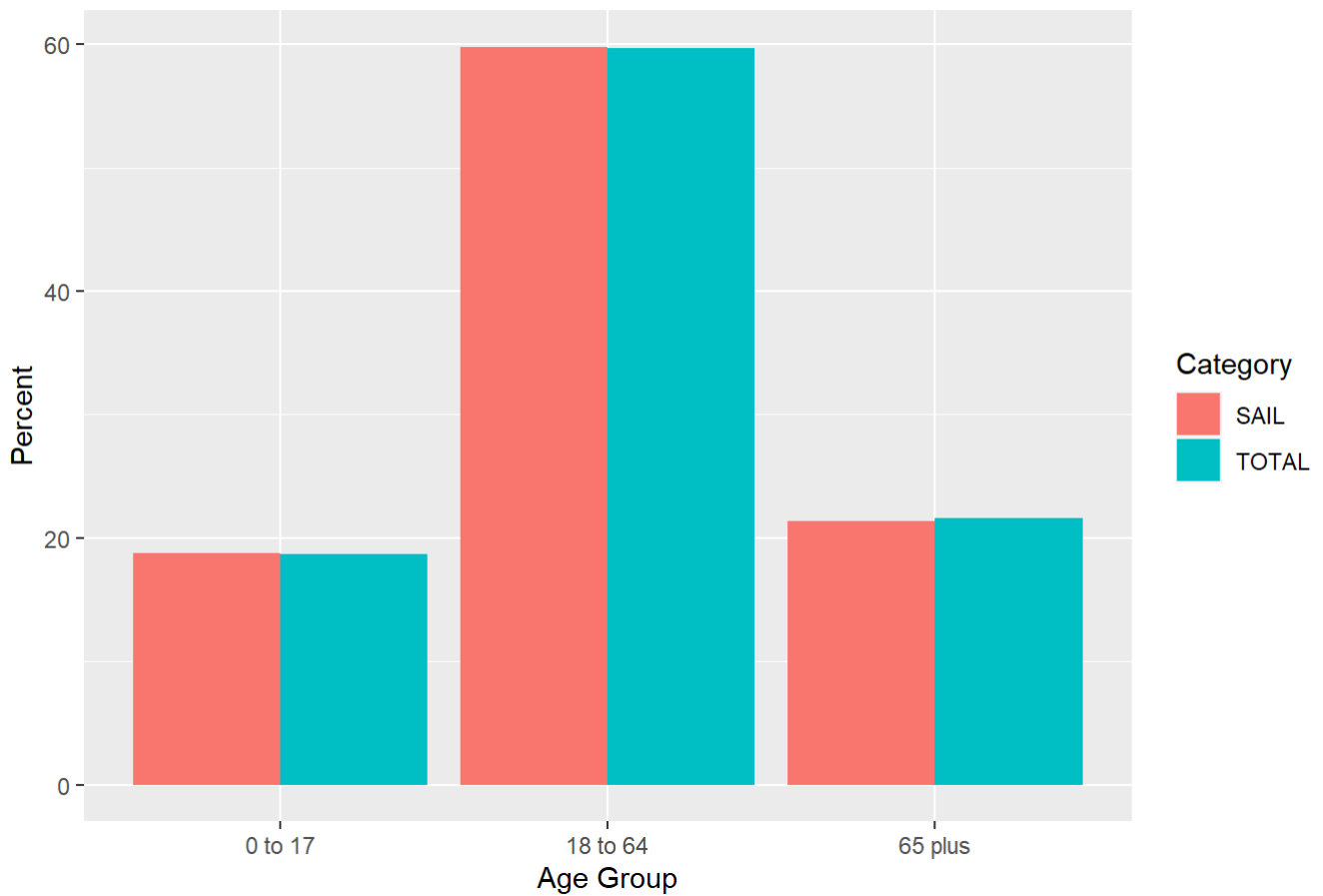
| Category                  | Total Population in SAIL (Percent) |
|---------------------------|------------------------------------|
| <b>Complete</b>           |                                    |
| •                         | 86.4                               |
| <b>Age Group</b>          |                                    |
| 0 to 17                   | 86.8                               |
| 18 to 64                  | 86.7                               |
| 65 plus                   | 85.5                               |
| <b>Sex</b>                |                                    |
| Female                    | 86.5                               |
| Male                      | 86.3                               |
| <b>WIMD 2019 Quintile</b> |                                    |
| 1 (Most Deprived)         | 89.7                               |
| 2                         | 88.5                               |
| 3                         | 85.4                               |
| 4                         | 82.3                               |
| 5                         | 88.0                               |
| NULL                      | 83.2                               |

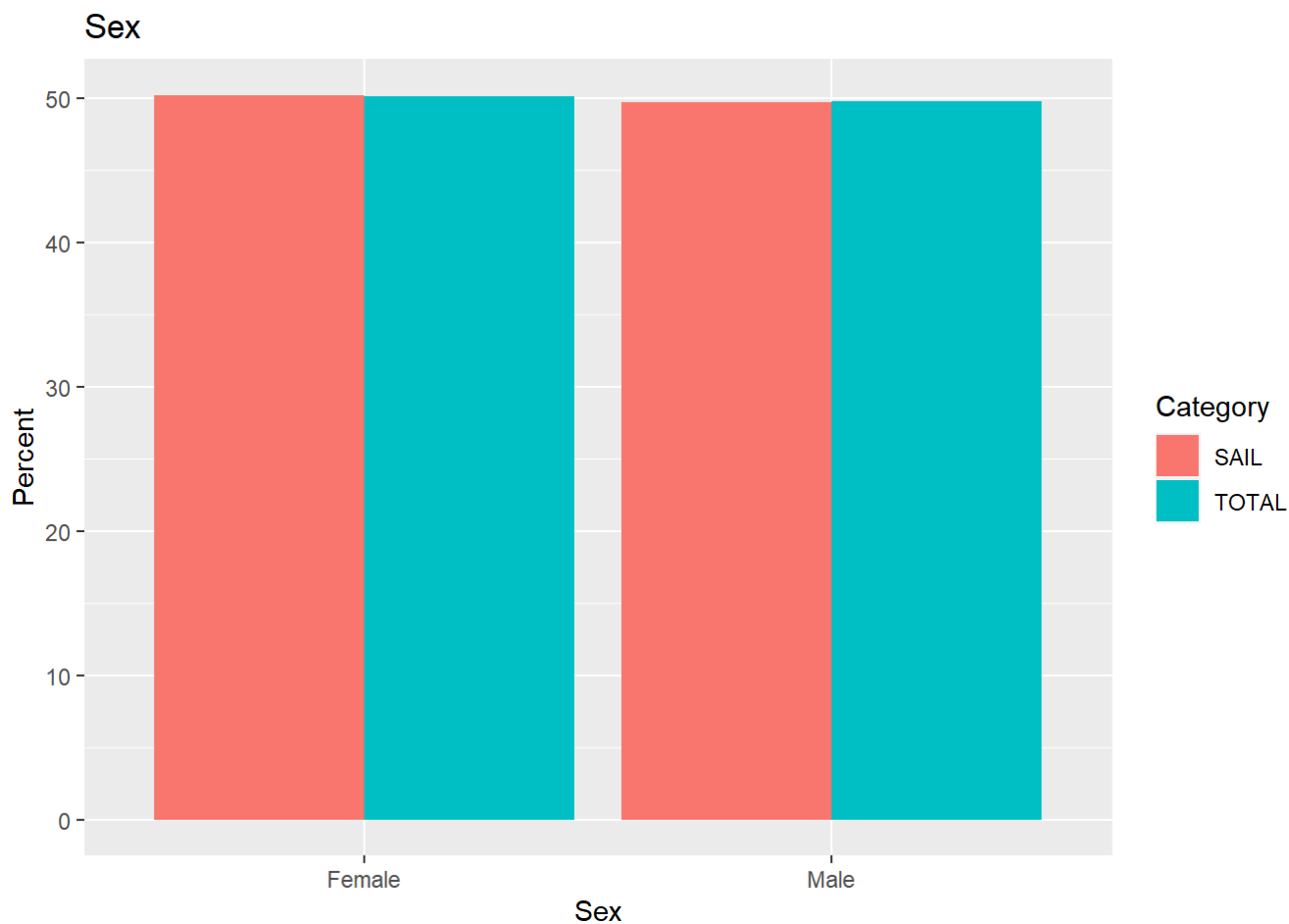
| Category                  | Breakdown of SAIL Patients (Percent) | Breakdown of Total Patients (Percent) |
|---------------------------|--------------------------------------|---------------------------------------|
| <b>Complete</b>           |                                      |                                       |
| •                         | 100.0                                | 100.0                                 |
| <b>Age Group</b>          |                                      |                                       |
| 0 to 17                   | 18.8                                 | 18.7                                  |
| 18 to 64                  | 59.8                                 | 59.7                                  |
| 65 plus                   | 21.4                                 | 21.6                                  |
| <b>Sex</b>                |                                      |                                       |
| Female                    | 50.2                                 | 50.2                                  |
| Male                      | 49.8                                 | 49.8                                  |
| <b>WIMD 2019 Quintile</b> |                                      |                                       |
| 1 (Most Deprived)         | 20.0                                 | 19.4                                  |
| 2                         | 19.2                                 | 18.8                                  |
| 3                         | 18.7                                 | 18.9                                  |
| 4                         | 17.4                                 | 18.3                                  |
| 5                         | 18.8                                 | 18.5                                  |
| NULL                      | 5.8                                  | 6.1                                   |

### WIMD 2019 Quintile



### Age Group





| Health Board                                    | SAIL General Practices (Percent by No. of Practices) |
|---|--|
| Aneurin Bevan LHB                               | 78.08  |
| Betsi Cadwaladr University LHB                  | 80.41  |
| Cardiff and Vale University LHB                 | 84.48  |
| Cwm Taf Morgannwg University Local Health Board | 96.96  |
| Hywel Dda LHB                                   | 79.16  |
| Powys Teaching LHB                              | 43.75  |
| Swansea Bay University Local Health Board       | 95.31  |
| <b>TOTAL</b>                                    | <b>82.77</b>   |

# Health Board

