



# SAIL User Forum

May 19<sup>th</sup> 2022



# SAIL User Forum - May 2022

## Agenda

<b>1.¶</b>	<b>Welcome to SAIL user forum¶</b>
1.1¶	Introduction and welcome --- thank you for feedback received following last forum. Information on new confluence page.¶
<b>2.¶</b>	<b>Talks on today theme¶</b>
¶	<b>Respiratory research¶</b>
2.1¶	Talk 1: Swansea Respiratory group (Mohammad Al'Sallakh) --- Asthma and COPD exacerbations during the COVID-19 pandemic and the latest from the Wales Asthma Observatory¶
2.2¶	Talk 2: BREATHE (Jenni Quint) --- BREATHE Cohort Curation¶
<b>3.¶</b>	<b>Governance and legal team¶</b>
<b>4.¶</b>	<b>Technical services¶</b>
<b>5.¶</b>	<b>Marketing and comms¶</b>
<b>6.¶</b>	<b>Time for questions and discussion from the SAIL community¶</b>
<b>7.¶</b>	<b>Feedback¶</b>
7.1¶	Survey link and ongoing feedback for user forums moving forward.¶
7.2¶	Contact us if you are interested in presenting at the next / future user forum.¶
<b>8.¶</b>	<b>AOB¶</b>

Confluence page for all SAIL User Forum details: <https://docs.hiru.swan.ac.uk/display/SUF>

# SAIL User Forum - May 2022

1. Welcome to SAIL user forum



Some general house keeping points:



SAIL User forum's will not be recorded.



All slides will be shared after the forum via confluence.



Q&A is welcome via the chat or at designated points over video/audio.



Please mute microphones when not asking questions or presenting.

# SAIL User Forum - May 2022

## 1. Welcome to SAIL user forum

### What to expect from the “new” SAIL user forums moving forward...



Forum frequency & timings – bi-monthly and on maintenance windows.



Forum chairs – Ashley Akbari & Chris Orton.



Forum structure & content – standing agenda, input from community.



Forum contact – questions/suggestions [sailbusinessadmin@chi.swan.ac.uk](mailto:sailbusinessadmin@chi.swan.ac.uk)

# SAIL User Forum - May 2022

## 2. Talks

### **Respiratory research**

### Two talks (*15mins each*):

Talk 1: Swansea Respiratory group (Mohammad Al'Sallakh)

Asthma and COPD exacerbations during the COVID-19 pandemic and the latest from the Wales Asthma Observatory

Talk 2: BREATHE (Jenni Quint)

BREATHE Cohort Curation



# SAIL User Forum - January 2022

## 3. Governance and Legal team



Cynthia Mcnerney, Sharon Heys & Rob Garlick (*Governance & Legal team*)

- Updates on SAIL policies and user agreements

# SAIL User Forum - January 2022

## 4. Technical services

Richard Hier (*Technical services team*)



# SAIL Technology – Virtual Desktop Infrastructure

- Testing of the new VDI solution has completed with members of the SAIL analytical team being those guinea pigs!
- Go Live is today !!!!
- The following communication has gone out

*“The long awaited new VDI infrastructure is in place and ready to be rolled out to our users. We have trialled the new VDI with some of our users over the last few week and have welcomed both their positive feedback and help in identifying issues. These issues have now been resolved and we have added some FAQs linked to these which can be accessed by searching ‘known issues’ at <https://jira.hiru.swan.ac.uk/servicedesk/customer/portals>*

*Users are advised to launch the Horizon client through the [SAIL portal](#), in order to acquire the new access address as this has been updated. To download the Horizon client user must log on to the [SAIL portal](#), and click "Get Client" this will download the latest version of the client.*

*If you experience any issues with accessing the new VDI please log a call at [helpdesk@chi.swan.ac.uk](mailto:helpdesk@chi.swan.ac.uk) / <https://jira.hiru.swan.ac.uk/servicedesk/customer/portals>”*



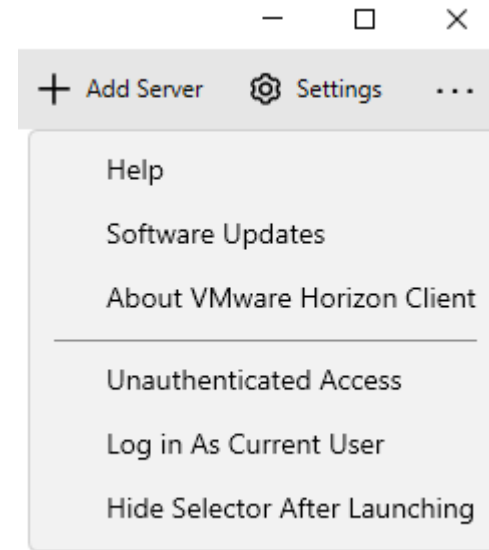
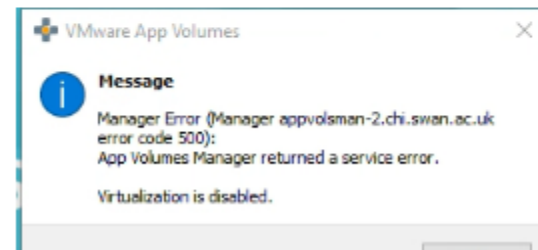
# SAIL Technology – Virtual Desktop Infrastructure

1. Need to ensure you've updated your client (can do that now)
2. Need to visit <https://portal.sail.ukserp.ac.uk/> as the addresses are saved in the client are for the old infrastructure
3. If you're having an issue, check the known issues page then log a ticket.

## Unable to log into Web-based VMware Horizon

Some users have had issues logging into the HTML Access version of VMware client through the SAIL portal. If there are issues using Horizon client please use the web-based version.

## App Volumes manager Error



# SAIL Technology – Stability

- System Availability

- Back up routines have been optimised. Weekend backups now completing by lunch time on Sunday
- Aim to reduce back up times to within a 24 hour window
- Moving to full offline backups (current solution) to one weekend a month – was scheduled for end of last month.

# SAIL Technology – Additional Components

- High Performance Computing cluster – *Work in Progress*
- Jupyter Hub to be made available for SAIL users - *Testing has started with small number of users*
- Alex will demonstrate the progress she's made to date.
- Migration away from DB2
  - Discovery work is ongoing on this.
  - Solution has been identified and we're working to ensure a seamless transition.
  - Will bring details to this meeting as soon as we have them



# SAIL Databank Communications Update

Chris Roberts

Senior Impact & Engagement Officer



## Annual Report

The 2020/21 SAIL Databank Annual Report is now available to view and download. The report has a large focus on SAIL's work and impact during COVID-19 and how SAIL has adapted swiftly to meet the demands of health and administrative data research during a global pandemic.



The report details SAIL's extensive networks of partners and collaborators that work together to use public data for the public good. The report also highlights the investment from Health and Care Research Wales, SAIL's public engagement activities and its future developments.

[View Annual Report](#)



Operational status update:

SAIL Databank is now fully operational





**SAIL Databank is a rich  
and trusted population databank**

Robust governance you can trust



Apply to work with the data

Explore the datasets

Research types

Projects & usage reports

Publications & Impact



**SAIL Databank is a rich  
and trusted population databank**

Robust governance you can trust



Apply to work with the data

Explore the datasets

Research types

Projects & usage reports

Publications & Impact



**SAIL Databank is a rich  
and trusted population databank**





# SAIL DATABANK

Data usage reports  
March 2022



[Dashboard](#)



[Datasets Usage](#)



[Areas of Research](#)



[Breakdown of Research Areas](#)



[Organisation Types](#)



[List of Active Projects](#)

**Public data for public good**

# Publications & Impact

## Publications



### Keyword Search

### Project code

### Year

### Research Area







### Total Publications

518

### Publications by year

Zhou, S.M., Tsang, G., Xie, X., Huo, L., Brophy, S. and Lyons, R.A., 2018. Mining electronic health records to identify influential predictors associated with hospital admission of patients with dementia: an artificial intelligence approach. <i>The Lancet</i> , 392, p.S9.	2018 Journal
Zhou, S.M., Fernandez-Gutierrez, F., Kennedy, J., Cooksey, R., Atkinson, M., Denaxas, S., Siebert, S., Dixon, W.G., O'Neill, T.W., Choy, E. and Sudlow, C., 2016. Defining disease phenotypes in primary care electronic health records by a machine learning approach: a case study in identifying rheumatoid arthritis. <i>PLoS one</i> , 11(5), p.e0154515.	2016 Article
Yerramalla, M.S., McGregor, D.E., van Hees, V.T., Fayosse, A., Dugravot, A., Tabak, A.G., Chen, M., Chastin, S.F. and Sabia, S., 2021. Association of daily composition of physical activity and sedentary behaviour with incidence of cardiovascular disease in older adults. <i>International Journal of Behavioral Nutrition and Physical Activity</i> , 18(1), pp.1-13.	2021 Journal article
Williams, N.H., Mawdesley, K., Roberts, J.L., Din, N.U., Totton, N., Charles, J.M., Hoare, Z. and Edwards, R.T., 2018. Hip fracture in the elderly multidisciplinary rehabilitation (FEMuR) feasibility study: testing the use of routinely collected data for future health economic evaluations. <i>Pilot and Feasibility Studies</i> , 4(1), p.76.	2018 Article
Wilkinson, T., Schnier, C., Bush, K., Rannikmäe, K., Lyons, R.A., McTaggart, S., Bennie, M. and Sudlow, C.L., 2021. Drug prescriptions and dementia incidence: a medication-wide association study of 17000 dementia cases among half a million participants. <i>J Epidemiol Community Health</i> .	2021 Article
White, J., Greene, G., Farewell, D., Dunstan, F., Rodgers, S., Lyons, R.A., Humphreys, I., John, A., Webster, C., Phillips, C.J. and Fone, D., 2017. Improving mental health through the regeneration of deprived neighborhoods: a natural experiment. <i>American journal of epidemiology</i> , 185(1), pp. 473-480.	2016 Article

## Our Impact

		
<p><b>IMPACT</b></p> <p><b>COVID-19 Health Data Research: 2 November 2021 – Monthly update for SAGE (UK Government)</b></p> <p>Working with The Strategic Advisory Group for Emergencies (SAGE) by providing SAGE with the prioritised health data research related to COVID-19. &gt;Read more</p>	<p><b>IMPACT</b></p> <p><b>Data Explained: The Welsh Results Reports Service (WRRS) Data</b></p> <p>The Welsh Results Reporting Service (WRRS) allows health care professionals(HCPs) across Wales to access, enter and view laboratory results for pathology requests and any other associated ...</p>	<p><b>IMPACT</b></p> <p><b>Born into care: unpacking the impact of area-level deprivation in Wales.</b></p> <p>This report explores the relationship between area-level rates of infants and children appearing in care proceedings in Wales and deprivation, unpacking the impact of the ...</p>
		
<p><b>IMPACT</b></p> <p><b>A strategic approach to social care data in Wales</b></p> <p>This is a discovery report, produced in response to a requirement to scope the development of a data strategy to support social services and social ...</p>	<p><b>IMPACT</b></p> <p><b>Uncovering Private Family Law: Adult characteristics and vulnerabilities (Wales)</b></p> <p>This report by the Family Justice Data Partnership a collaboration between Lancaster University and Swansea University exposes the heightened socioeconomic and health vulnerabilities of women ...</p>	<p><b>IMPACT</b></p> <p><b>ADR Wales: European Union migrants living in Wales</b></p> <p>Examining the differences between the number of European Union (EU) migrants living in Wales, and other countries of the UK, using different data sources. Read ...</p>

**Public data for public good**

HOME // Newsroom

# SAIL Databank Newsroom

All

Blog

Events

Impact

News



NEWS

**SAIL Databank benchmarked against leading European health**



NEWS

**All Wales Injury Surveillance System (AWISS) uses SAIL Databank to gauge**

[HOME](#) // [ABOUT US](#) // [SAIL Reports](#)

# SAIL Reports

## SAIL Databank Annual Report (2020-21)

This year has been without doubt the most challenging period in the existence of SAIL Databank. The COVID-19 pandemic has led to unprecedented demands for data to support government and NHS emergency planning, and also to support longer term research into all aspects of the virus.

[VIEW REPORT](#)

## Analytical Team Annual Report (2020-2021)

Welcome to the SAIL Analytical Services first annual report. The team was established in 2014 to support SAIL Databank users, over time our services and experience has grown. This report highlights some research projects we are supporting and summarises the services that we currently provide.

[VIEW REPORT](#)<https://saildatabank.wpengine.com/about-us/sail-reports/>

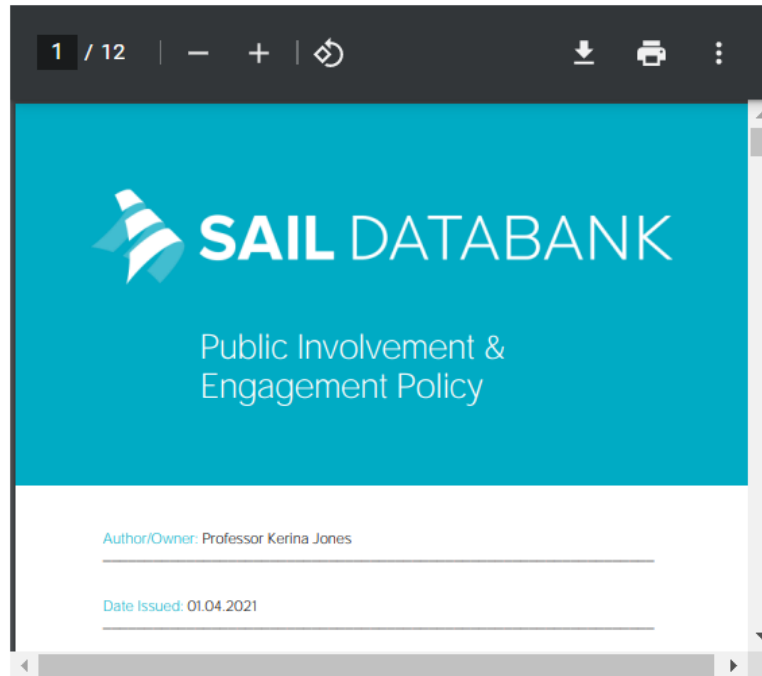
### SAIL Reports

[Our Collaborators](#)[Our History](#)[Policies & Information](#)[The Team](#)[What is a TRE?](#)[Data Explained: The Welsh Results Reports Service \(WRRS\) Data](#)[APRIL 11, 2022](#)[Data Research: 2 Monthly update \(Government\)](#)

HOME // ABOUT US // Policies & Information

## Policies & Information

### Public Involvement & Engagement Policy



SAIL Public Involvement & Engagement Policy V1.1

[Download](#)

SAIL Reports

Our Collaborators

Our History

Policies & Information

The Team

What is a TRE?

**Data Explained: The Welsh Results Reports Service (WRRS) Data**

APRIL 11, 2022

**Data Research: 2 Monthly update (Government)**



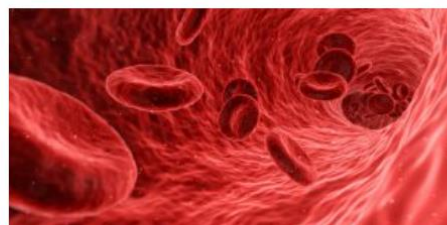


### **CREATING A NEAR REAL-TIME MONITORING DASHBOARD FOR MEDICATION DISPENSING DURING COVID-19 USING SAIL DATABANK.**

🕒 29 April 2022

COVID-19 has led to substantial changes in community pharmacy drug dispensing patterns. Measures for keeping the spread of the COVID-19 virus under control resulted in many face-to-face activities moving to online and telephone consultations unless necessary. Many individuals experienced this change in their routine interaction with clinical services such as blood tests, repeated medication, GP...

[Read More](#)



### **BLOG: EFFECTS OF SEX AND DEPRESSION ON ACHIEVING LIPID REDUCTION TARGETS IN PATIENTS AT HIGH-RISK OF CORONARY HEART DISEASE.**

🕒 1 March 2022

Researchers have examined whether sex and depression might influence how effectively blood lipids are treated in high-risk heart disease patients. Lipids are blood fats that, amongst other substances, include cholesterol and triglycerides. They looked at whether lipid levels were checked and if so whether guideline target levels for lipids were achieved through the prism of...

[Read More](#)



### **QCOVID – THE UK’S COVID-19 MORTALITY PREDICTION MODEL EVALUATED IN WALES USING SAIL DATABANK**

🕒 17 February 2022

Research paper available here in UPDS Download Infographic New research offers an external and independent assessment of the first QCovid prediction tool used to estimate the risk of a person being hospitalised, or dying from COVID-19. This study was designed to evaluate the validity of the original QCovid algorithm for COVID-19-related deaths in the Welsh...

[Read More](#)

## COVID-19 HAS LED TO SUBSTANTIAL CHANGES IN COMMUNITY PHARMACY DRUG DISPENSING PATTERNS.

Measures for keeping the spread of the COVID-19 virus under control resulted in many face-to-face activities moving to online and telephone consultations unless necessary.

Many individuals experienced this change in their routine interaction with clinical services such as blood tests, repeated medication, GP consultations etc. These changes may have resulted in missed opportunities in diagnosing and treatment of some groups.

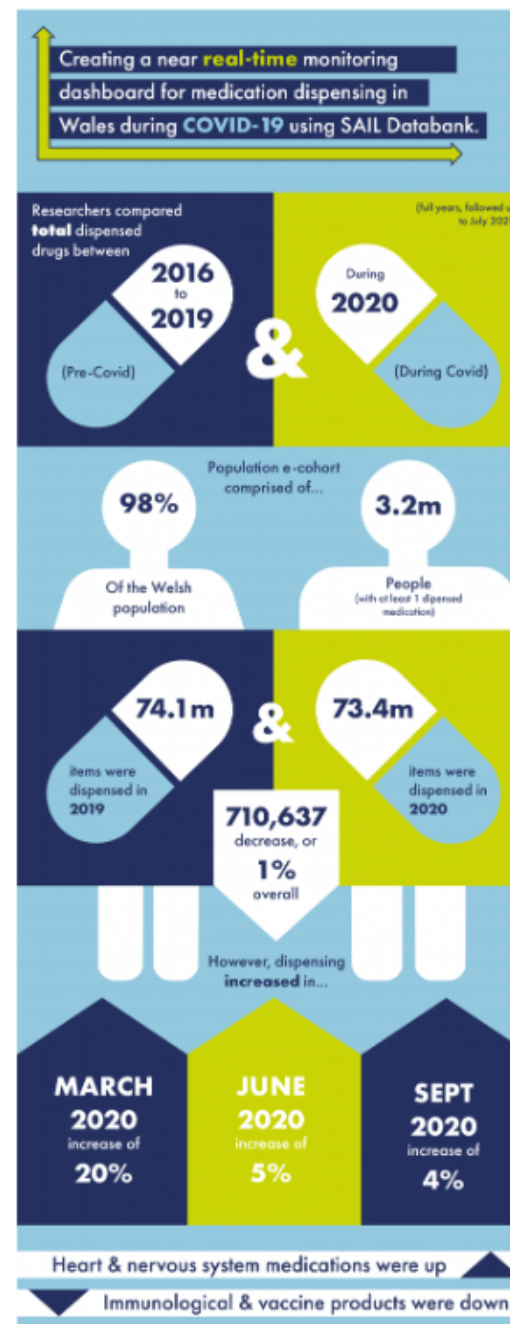
It is still unknown how many people have been seriously affected by these changes and what will be the long-term impact on overall population health?

The result of the new analysis provides direct insights into how health services, such as community pharmacies, are being used across the Welsh population before and after COVID-19. This provides important insight into people's health and uncovers the specific health conditions people are being treated for as well as supporting healthcare delivery planning and public health strategies.

A team of researchers led by Prof. Ronan Lyons analysed drug dispensing records for the population of Wales. The [research team developed an interactive dashboard](#) that illustrates the total number of medications that were dispensed to individual patients from 2016 to 2021. A simple comparison of the total number of items revealed changes in routine dispensing patterns at the start of the first COVID-19 lockdown in March 2020. In Wales, most people who were on repeated prescriptions have been given a supply for 2 or 3 months to keep required interactions under control.

This work forms part of the Con-COV initiative, **Controlling COVID-19** through enhanced population surveillance and intervention, funded by HDR UK and the Medical Research Council.

In conversation with the lead authors, Fatemeh Torabi (FT) and Ashley Akbari (AA), we asked them to tell us more about their research,







Fatemeh Torabi (FT)



Ashley Akbari (AA)

This research created a **Research Ready Data Asset (RRDA)** of the Welsh Dispensing Data Set (WDDS), consisting of 94% of ALL prescriptions dispensed for all residents of Wales.

This can be used in near **real-time** to monitor dispensing trends during public health crises.



Medical School  
Ysgol Feddygaeth

Population Data Science  
Gwyddor Data Poblogaeth



### Is this the first study of its kind?

FT "This is the first study using Welsh Dispensing DataSet available in SAIL Databank to generate insights on dispensing patterns over the course of COVID-19 pandemic, we show these in a near real time as part of our dispensing dashboard available at <https://wdds.ml>."

AA "We also have been the first to generate a research ready data asset for Welsh Dispensing DataSet which is bringing the value and speed to further research on dispensed medication in Wales"

### How did you approach the research and construct the dashboard?

FT "Our main aim was to find any signals that could tell us about a change in how people have accessed their medications through community pharmacy. For this, initially we compared 2020 (COVID-19 year) to 2019. We then looked in more details for any signal of change by comparing total numbers in each month of 2020 vs 2019. The dashboard enables users to further explore this breakdown and investigate patterns over time starting from 2016 and for 20 different types of drug chapters."

### How did SAIL enable the creation the dashboard?

AA "SAIL Databank is a Trusted Research Environment for Wales operating under the *Five Safes framework*. What this



## PUBLIC HEALTH PROFESSOR BECOMES FELLOW OF ACADEMY OF MEDICAL SCIENCES

🕒 11 May 2022

A Swansea University public health expert has been honoured by the prestigious Academy of Medical Sciences. Professor Ronan Lyons, Clinical Professor of Public Health at Swansea University Medical School and one of the two Directors at Population Data Science, is one of 60 outstanding biomedical and health scientists admitted to the Academy's influential Fellowship. The new Fellows have...

[Read More](#)



## SERP Praised as Model TRE in Review Commissioned by Secretary of State for Health & Social Care

🕒 25 April 2022

SeRP – the Secure eResearch Platform – is a data solutions technology housed within Population Data Science at Swansea University Medical School. SeRP has been recognised as a model for future Trusted Research Environment (TRE) development in the health data landscape in an independent report published by the UK Government's Department of Health and Social Care....

[Read More](#)



## POPULATION DATA SCIENCE ACADEMICS SELECTED AS SENIOR RESEARCH LEADERS FOR WALES

🕒 7 April 2022

Health and Care Research Wales has selected two researchers from Population Data Science at Swansea University in their next cohort of Senior Research Leaders. The researchers will act as ambassadors for research into diseases, treatments and services that can change people's lives and drive improvements in patient care. Health and Care Research Wales Senior Research...

[Read More](#)

## PROFESSOR IN PUBLIC HEALTH AT SWANSEA UNIVERSITY RECOGNISED IN NEW YEAR'S HONOURS

🕒 11 January 2022

A public health expert recognised by the Queen says his honour is a reflection of just how highly the work of Swansea University's SAIL Databank is regarded. Professor Ronan Lyons was appointed OBE for his services to Research, Innovation and Public Health. A Clinical Professor of Public Health at Swansea University Medical School and one...

[Read More](#)



Population Data Science at Swansea University  
@PopDataSci\_SU



Fantastic night at the @SwanseaUni Research & Innovation Awards 2022 with some great wins for our team - including:

🌟 Outstanding Impact on Health & Wellbeing won by #SAILDatabank & @PopDataSci\_SU

🌟 Recognised for Outstanding Response to COVID Pandemic won by @UKMSRegister





### The SAIL Databank Annual User Survey

We'd like to hear about your experience of using SAIL Databank to improve our systems, services and support for your research.

This survey contains up to 30 questions taking 5-10 minutes to complete.

What type of organisation do you work for? for e.g. University, NHS, Government etc.

Is your research related to COVID-19?

- Yes
- No

Have you undertaken previous research using SAIL Databank to that of your current/most recent project?

[Access the annual survey here](#)

**Contact SAIL communications team if interested in completing a blog, news stories or other dissemination around your new funding / work / outputs.**

**[Christopher.Roberts@Swansea.ac.uk](mailto:Christopher.Roberts@Swansea.ac.uk)**



# SAIL User Forum - May 2022

6. Time for questions and discussion from the SAIL community



Anyone at the meeting today – any questions?



# SAIL User Forum - May 2022

## 7. Feedback



We will request feedback after each forum, we are keen to hear how we can improve the forums moving forward and tailor them to be more impactful & useful to the SAIL community.

Please contact the SAIL email with any feedback or requests for changes please.

# SAIL User Forum - May 2022

## 7. Feedback



Are you interested in presenting at a future SAIL user forum?

Do you have any requests for areas of research / developments you would like to hear about at the next forum or in the future?

Please contact SAIL by June 16th [sailbusinessadmin@chi.swan.ac.uk](mailto:sailbusinessadmin@chi.swan.ac.uk)

# SAIL User Forum - May 2022

## 7. Feedback

Confluence page for all SAIL User Forum details: <https://docs.hiru.swan.ac.uk/display/SUF>

SAIL User Forums for 2022 will be on *(other SAIL/SeRP maintenance window dates on the website):*

Thursdays (10:00 - 12:00)

- 21<sup>st</sup> July 2022
- 15<sup>th</sup> September 2022
- 17<sup>th</sup> November 2022

All the dates are available on confluence, and downloadable calendar.





Any further questions...

Thank you for coming



## Funded by



Ymchwil Iechyd  
a Gofal Cymru  
Health and Care  
Research Wales



Ariennir gan  
Lywodraeth Cymru  
Funded by  
Welsh Government



Economic  
and Social  
Research Council

## Certified by



IS632731

## Supported by



Swansea University  
Prifysgol Abertawe

## In partnership with



GIG  
CYMRU  
NHS  
WALES | Gwasanaet  
Gwybodeg  
Informatics  
Service

## Accredited by



UK Statistics  
Authority  
Awdurdod  
Ystadegau'r DU

[www.SAILDatabank.com](http://www.SAILDatabank.com)

## Powered by



SeRP  
ISO certified and UK Statistics  
Authority Accredited